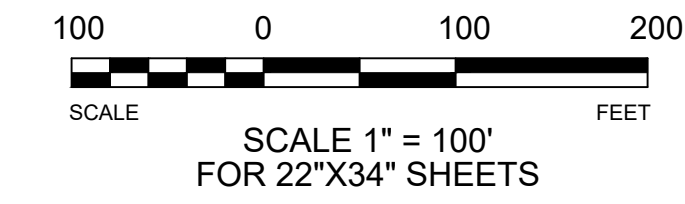
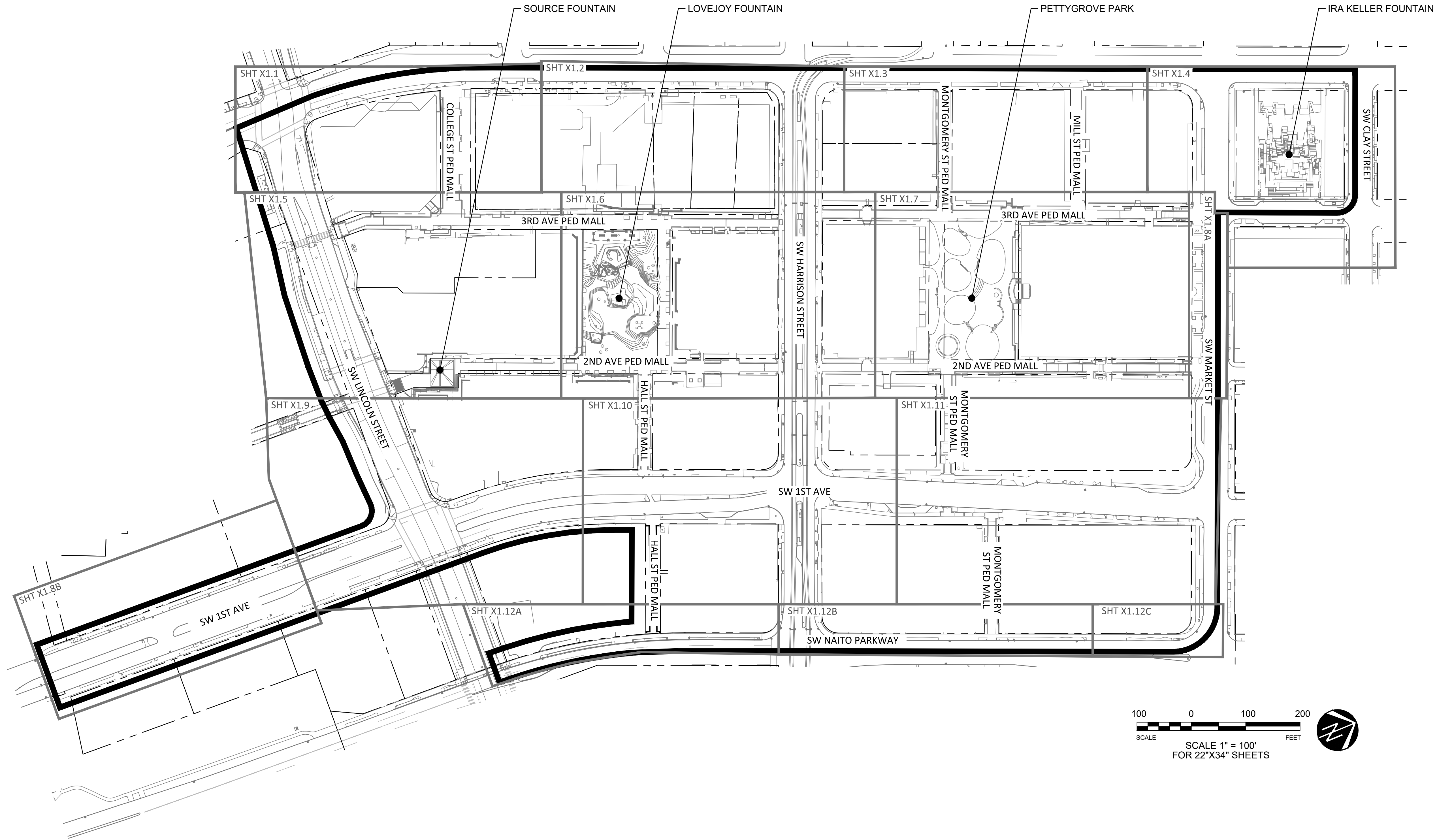


PLOTTED FROM: \$COMPUTERNAME\$

PLOTTED BY: \$USERNAME\$

PLOTTED ON: \$DATE\$

DRAWING: \$FILE\$



EXISTING SHRUB AND GROUNDCOVER
SURVEYED 2/26-28/2018 BY ESA.

NOTE:
SCALE INDICATED ON DRAWING
IS CORRECT IF DRAWING
BORDER IS 22" x 34".



Portland Parks and Recreation
Halprin Open Space Sequence

Nick Fish, Commissioner - Kia Selley, Interim Director

SW 1st Avenue and SW Lincoln Street to SW 4th Avenue and SW Clay Street

Portland, Oregon

PROJECT MANAGER:

DATE: 12/17/2018

SCALE:

SECTION:

REVISIONS		
DATE	DESCRIPTION	BY

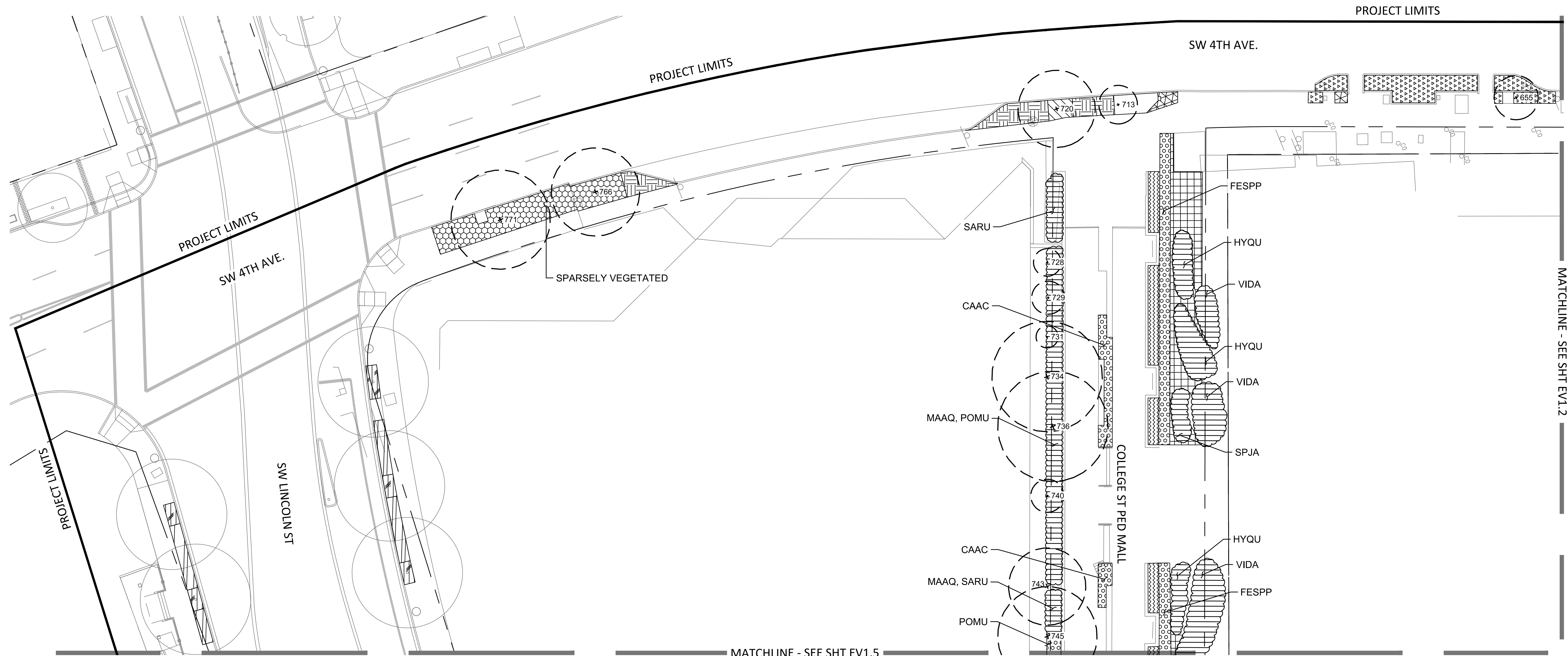
Sheet Title
EV1.0
EXISTING VEGETATION
SHEET INDEX

PLOTTED FROM: \$COMPUTERNAME\$

PLOTTED BY: \$USERNAME\$

PLOTTED ON: \$DATE\$

DRAWING: \$FILE\$



GROUND COVER LEGEND

- ARCTOSTAPHYLOS UVA-URSI - KINNICKINNICK (ARUV)
- BARE EARTH
- BARK MULCH
- PAVING
- COTONEASTER DAMMERI - BEARBERRY COTONEASTER (CODA)
- GRAVEL
- HEDERA HELIX - ENGLISH IVY (HEHE)
- JUNCUS EFFUSUS - SOFT RUSH (JUEF)
- LAWN
- PACHYSANDRA TERMINALIS - JAPANESE SPURGE (PATE)
- SARCOCOCCA HOOKERIANA VAR HUMILIS - HIMALAYAN SWEETBOX (SAHO)
- VARIOUS GROUND COVER PLANTING (SEE NOTE AND LABEL)
- VARIOUS WEEDS
- VINCA MINOR - SMALL PERIWINKLE (VIMI)
- WATER QUALITY FACILITY

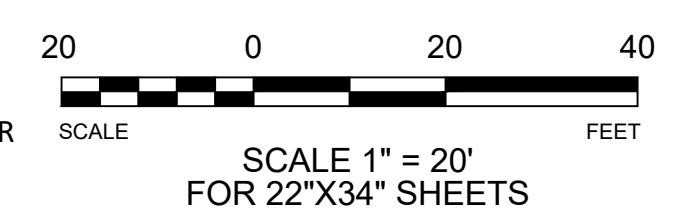
SHRUB LEGEND

- BERBERIS THUNBERGII 'ATROPURPUREA' - PURPLE JAPANESE BARBERRY (BETH)
- COTONEASTER LACTEUS - PARNEY COTONEASTER (COLA)
- EUONYMUS JAPONICUS 'AUREO-MARGINATUS' - VARIEGATED JAPANESE EUONYMUS (EUJA)
- ILEX CORNUTA - CHINESE HOLLY (ILCO)
- ILEX CRENATA 'HELLERI' - JAPANESE HOLLY (ILCR)
- MAHONIA AQUIFOLIUM - TALL OREGON GRAPE (MAAQ)
- NANDINA DOMESTICA - HEAVENLY BAMBOO (NADO)
- PIERIS JAPONICA - ANDROMEDA (PIJA)
- RHODODENDRON SPP. - RHODODENDRON (RHSP 'R')
- VARIOUS SHRUB PLANTING (SEE NOTE AND LABEL)

NOTE:

VARIOUS GROUND COVER PLANTING INCLUDES:
 CALAMAGROSTIS X ACUTIFLORA 'KARL FOERSTER' - FOERSTER'S FEATHER REED GRASS (CAAC), FESTUCA SPP. - FESCUE (FESPP), POLYSTICHUM MUNITUM - WESTERN SWORD FERN (POMU)

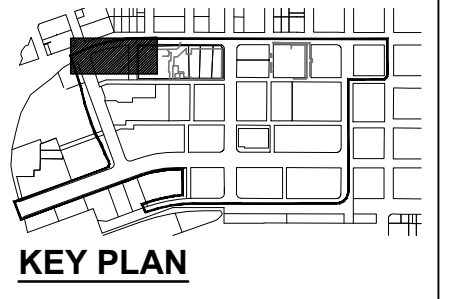
VARIOUS SHRUB PLANTING INCLUDES:
 HYDRANGEA QUERCIFOLIA - OAKLEAF HYDRANGEA (HYQU), MAHONIA AQUIFOLIUM - TALL OREGON GRAPE (MAAQ), SARCOCOCCA RUSCIFOLIA - FRAGRANT SWEETBOX (SARU), SPIRAEA JAPONICA - JAPANESE SPIREA (SPJA), VIBURNUM DAVIDII - DAVID VIBURNUM (VIDA)



EXISTING SHRUB AND GROUND COVER SURVEYED 2/26-28/2018 BY ESA.



NOTE: SCALE INDICATED ON DRAWING IS CORRECT IF DRAWING BORDER IS 22" X 34".



Portland Parks and Recreation
 Halprin Open Space Sequence

Nick Fish, Commissioner - Kia Selley, Interim Director
 SW 1st Avenue and SW Lincoln Street to SW 4th Avenue and SW Clay Street
 Portland, Oregon

PROJECT MANAGER:
 DRAWN BY:
 SECTION:
 DATE: 12/17/2018
 SCALE:

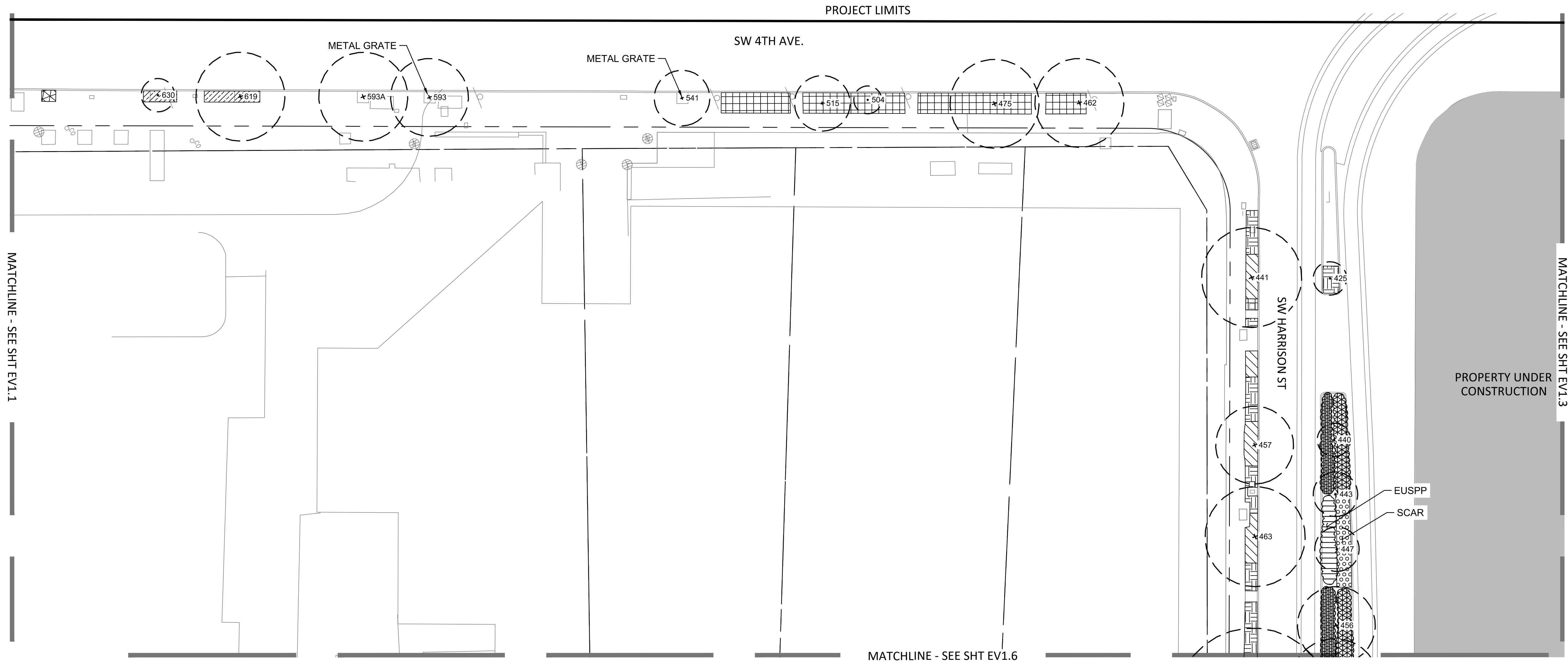
REVISIONS		
DATE	DESCRIPTION	BY

PLOTTED FROM: \$COMPUTERNAME\$

PLOTTED BY: \$USERNAME\$

PLOTTED ON: \$DATE\$

DRAWING: \$FILE\$



GROUND COVER LEGEND

- ARCTOSTAPHYLOS UVA-URSI - KINNICKINNICK (ARUV)
- BARE EARTH
- BARK MULCH
- PAVING
- COTONEASTER DAMMERI - BEARBERRY COTONEASTER (CODA)
- GRAVEL
- HEDERA HELIX - ENGLISH IVY (HEHE)
- JUNCUS EFFUSUS - SOFT RUSH (JUEF)
- LAWN
- PACHYSANDRA TERMINALIS - JAPANESE SPURGE (PATE)
- SARCOCOCCA HOOKERIANA VAR HUMILIS - HIMALAYAN SWEETBOX (SAHO)
- VARIOUS GROUND COVER PLANTING (SEE NOTE AND LABEL)
- VARIOUS WEEDS
- VINCA MINOR - SMALL PERIWINKLE (VIMI)
- WATER QUALITY FACILITY

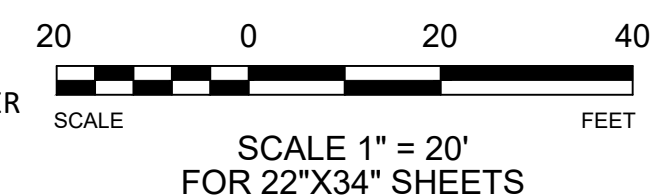
SHRUB LEGEND

- BERBERIS THUNBERGII 'ATROPURPUREA' - PURPLE JAPANESE BARBERRY (BETH)
- COTONEASTER LACTEUS - PARNEY COTONEASTER (COLA)
- EUONYMUS JAPONICUS 'AUREO-MARGINATUS' - VARIEGATED JAPANESE EUONYMUS (EUJA)
- ILEX CORNUTA - CHINESE HOLLY (ILCO)
- ILEX CRENATA 'HELLERI' - JAPANESE HOLLY (ILCR)
- MAHONIA AQUIFOLIUM - TALL OREGON GRAPE (MAAQ)
- NANDINA DOMESTICA - HEAVENLY BAMBOO (NADO)
- PIERIS JAPONICA - ANDROMEDA (PIJA)
- RHODODENDRON SPP. - RHODODENDRON (RHSP 'R')
- VARIOUS SHRUB PLANTING (SEE NOTE AND LABEL)

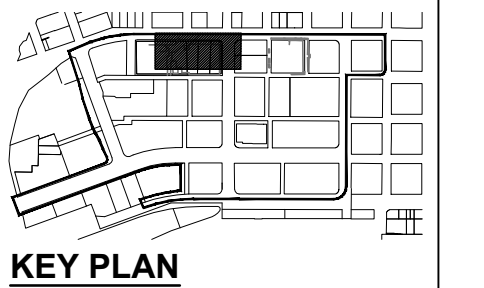
NOTE:

- VARIOUS GROUND COVER PLANTING INCLUDES:
SCHEDONORUS ARUNDINACEAE - TALL FESCUE (SCAR)
- VARIOUS SHRUB PLANTING INCLUDES:
EUONYMUS SPP. - EUONYMUS (EUSPP)

EXISTING SHRUB AND GROUND COVER SURVEYED 2/26-28/2018 BY ESA.



NOTE: SCALE INDICATED ON DRAWING IS CORRECT IF DRAWING BORDER IS 22" X 34".



Portland Parks and Recreation
Commissioner - Kia Selley, Interim Director
Halprin Open Space Sequence
SW 1st Avenue and SW Lincoln Street to SW 4th Avenue and SW Clay Street
Portland, Oregon

PROJECT MANAGER:
DRAWN BY:
SECTION:
SCALE:
DATE: 12/17/2018

REVISIONS		
DATE	DESCRIPTION	BY

PLOTTED FROM: \$COMPUTERNAME\$

PLOTTED BY: \$USERNAME\$

PLOTTED ON: \$DATE\$

DRAWING: \$FILE\$

PROJECT LIMITS

SW 4TH AVE.

BARK MULCH WITH ORNAMENTAL BOULDERS

CAOB WITH ORNAMENTAL BOULDERS AND FLAGSTONES

BARK MULCH WITH CAOB, ORNAMENTAL BOULDERS, FLAGSTONES

MILL ST PED MALL

MONTGOMERY ST PED MALL

PROPERTY UNDER CONSTRUCTION

RECENT CONSTRUCTION (NOT SURVEYED)

PESPP

MATCHLINE - SEE SHT EV1.7

MATCHLINE - SEE SHT EV1.4

GROUND COVER LEGEND

- ARCTOSTAPHYLOS UVA-URSI - KINNICKINNICK (ARUV)
- BARE EARTH
- BARK MULCH
- PAVING
- COTONEASTER DAMMERI - BEARBERRY COTONEASTER (CODA)
- GRAVEL
- HEDERA HELIX - ENGLISH IVY (HEHE)
- JUNCUS EFFUSUS - SOFT RUSH (JUEF)
- LAWN
- PACHYSANDRA TERMINALIS - JAPANESE SPURGE (PATE)
- SARCOCOCCA HOOKERIANA VAR HUMILIS - HIMALAYAN SWEETBOX (SAHO)
- VARIOUS GROUND COVER PLANTING (SEE NOTE AND LABEL)
- VARIOUS WEEDS
- VINCA MINOR - SMALL PERIWINKLE (VIMI)
- WATER QUALITY FACILITY

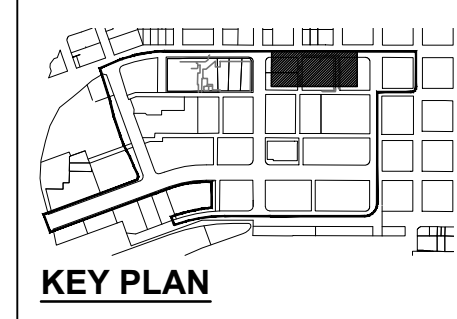
SHRUB LEGEND

- BERBERIS THUNBERGII 'ATROPURPUREA' - PURPLE JAPANESE BARBERRY (BETH)
- COTONEASTER LACTEUS - PARNEY COTONEASTER (COLA)
- EUONYMUS JAPONICUS 'AUREO-MARGINATUS' - VARIEGATED JAPANESE EUONYMUS (EUJA)
- ILEX CORNUTA - CHINESE HOLLY (ILCO)
- ILEX CRENATA 'HELLERI' - JAPANESE HOLLY (ILCR)
- MAHONIA AQUIFOLIUM - TALL OREGON GRAPE (MAAQ)
- NANDINA DOMESTICA - HEAVENLY BAMBOO (NADO)
- PIERIS JAPONICA - ANDROMEDA (PIJA)
- RHODODENDRON SPP. - RHODODENDRON (RHSP 'R')
- VARIOUS SHRUB PLANTING (SEE NOTE AND LABEL)

NOTE:

VARIOUS GROUND COVER PLANTING INCLUDES: CAREX DIVULSA - BERKELEY SEDGE (CADI), CAREX OBNUPTA - SLOUGH SEDGE (CAOB), GAULTHERIA SHALLON - SALAL (GASH), PENNISETUM SPP. - FOUNTAIN GRASS (PESPP)

VARIOUS SHRUB PLANTING INCLUDES: AMELANCHIER CANADENSIS - CANADIAN SERVICEBERRY (AMCA)



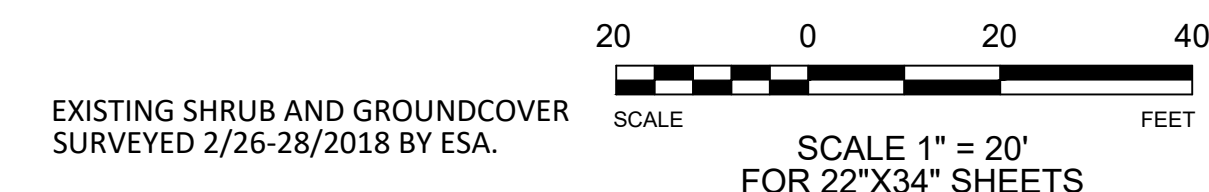
Portland Parks and Recreation
 Commissioner - Kia Selley, Interim Director

Halprin Open Space Sequence
 SW 1st Avenue and SW Lincoln Street to SW 4th Avenue and SW Clay Street

Portland, Oregon
 PROJECT MANAGER:
 DATE: 12/17/2018
 SCALE:
 DRAWN BY:
 SECTION:

REVISIONS		
DATE	DESCRIPTION	BY

Sheet Title
EV1.3
EXISTING VEGETATION PLAN



NOTE: SCALE INDICATED ON DRAWING IS CORRECT IF DRAWING BORDER IS 22" X 34".

GROUND COVER LEGEND

- ARCTOSTAPHYLOS UVA-URSI - KINNICKINNICK (ARUV)
- BARE EARTH
- BARK MULCH
- PAVING
- COTONEASTER DAMMERI - BEARBERRY COTONEASTER (CODA)
- GRAVEL
- HEDERA HELIX - ENGLISH IVY (HEHE)
- JUNCUS EFFUSUS - SOFT RUSH (JUEF)
- LAWN
- PACHYSANDRA TERMINALIS - JAPANESE SPURGE (PATE)
- SARCOCOCCA HOOKERIANA VAR HUMILIS - HIMALAYAN SWEETBOX (SAHO)
- VARIOUS GROUND COVER PLANTING (SEE NOTE AND LABEL)
- VARIOUS WEEDS
- VINCA MINOR - SMALL PERIWINKLE (VIMI)
- WATER QUALITY FACILITY

SHRUB LEGEND

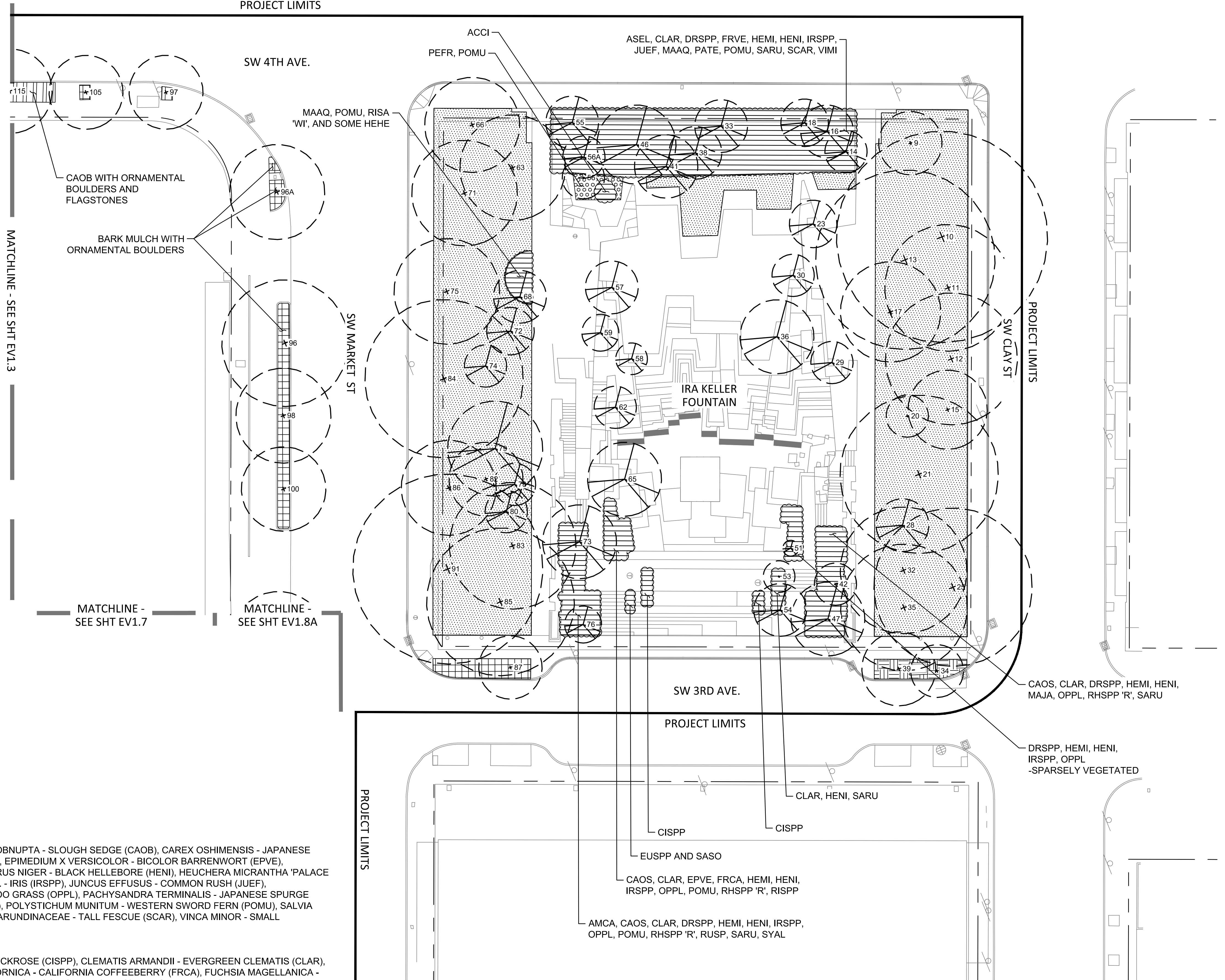
- BERBERIS THUNBERGII 'ATROPURPUREA' - PURPLE JAPANESE BARBERRY (BETH)
- COTONEASTER LACTEUS - PARNEY COTONEASTER (COLA)
- EUONYMUS JAPONICUS 'AUREO-MARGINATUS' - VARIEGATED JAPANESE EUONYMUS (EUJA)
- ILEX CORNUTA - CHINESE HOLLY (ILCO)
- ILEX CRENATA 'HELLERI' - JAPANESE HOLLY (ILCR)
- MAHONIA AQUIFOLIUM - TALL OREGON GRAPE (MAAQ)
- NANDINA DOMESTICA - HEAVENLY BAMBOO (NADO)
- PIERIS JAPONICA - ANDROMEDA (PIJA)
- RHODODENDRON SPP. - RHODODENDRON (RHSP 'R')
- VARIOUS SHRUB PLANTING (SEE NOTE AND LABEL)

NOTE:

VARIOUS GROUND COVER PLANTING INCLUDES:
 ASPIDISTRA ELIATOR - CAST-IRON PLANT (ASEL), CAREX OBNUPTA - SLOUGH SEDGE (CAOB), CAREX OSHIMENSIS - JAPANESE SEDGE (CAOS), DRYOPTERIS SPP. - WOOD FERN (DRSPP), EPIMEDIUM X VERSICOLOR - BICOLOR BARRENWORT (EPVE), FRAGARIA VESCA - WILD STRAWBERRY (FRVE), HELLEBORUS NIGER - BLACK HELLEBORE (HENI), HEUCHERA MICRANTHA 'PALACE PURPLE' - PURPLE PALACE CORAL BELLS (HEMI), IRIS SPP. - IRIS (IRSPP), JUNCUS EFFUSUS - COMMON RUSH (JUEF), OPHIOPOGON PLANISCAPUS 'NIGRESCENS' - BLACK MONDO GRASS (OPPL), PACHYSANDRA TERMINALIS - JAPANESE SPURGE (PATE), PETASITES FRIGIDUS - SWEET COLTSFOOT (PEFR), POLYSTICHUM MUNITUM - WESTERN SWORD FERN (POMU), SALVIA SONOMENSIS - CREEPING SAGE (SASO), SCHEDONORUS ARUNDINACEAE - TALL FESCUE (SCAR), VINCA MINOR - SMALL PERIWINKLE (VIMI)

VARIOUS SHRUB PLANTING INCLUDES:
 ACER CIRCINATUM - VINE MAPLE (ACCI), CISTUS SPP. - ROCKROSE (CISPP), CLEMATIS ARMANDII - EVERGREEN CLEMATIS (CLAR), EUONYMUS SPP - EUONYMUS (EUSPP), FRANGULA CALIFORNICA - CALIFORNIA COFFEEBERRY (FRCA), FUCHSIA MAGELLANICA - HUMMINGBIRD FUCHSIA (FUMA), MAHONIA AQUIFOLIUM - TALL OREGON GRAPE (MAAQ), MAHONIA JAPONICA - JAPANESE MAHONIA (MAJA), RHODODENDRON SPP. - RHODODENDRON (RHSP 'R'), RIBES SANGUINEAM 'WHITE ICICLE' - WHITE ICICLE FLOWERING CURRANT (RISA 'WI'), SARCOCOCCA RUSCIFOLIA - FRAGRANT SWEETBOX (SARU), SYMPHORICARPOS ALBUS - SNOWBERRY (SYAL)

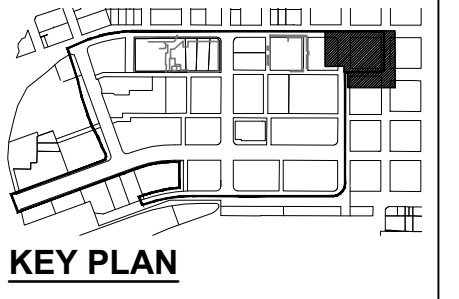
PROJECT LIMITS



MATCHLINE - SEE SHT EV1.3

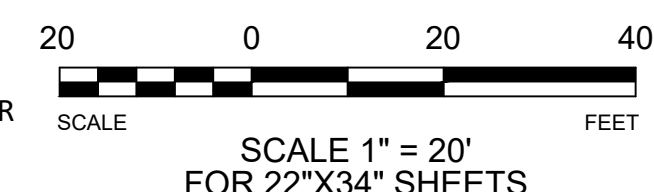
MATCHLINE - SEE SHT EV1.7

MATCHLINE - SEE SHT EV1.8A



Portland Parks and Recreation
 Commissioner - Nick Fish, Interim Director
Halprin Open Space Sequence
 SW 1st Avenue and SW Lincoln Street to SW 4th Avenue and SW Clay Street
 Portland, Oregon
 PROJECT MANAGER:
 DRAWN BY:
 SECTION:
 SCALE:
 DATE: 12/17/2018

REVISIONS		
DATE	DESCRIPTION	BY



EXISTING SHRUB AND GROUND COVER SURVEYED 2/26-28/2018 BY ESA.



NOTE: SCALE INDICATED ON DRAWING IS CORRECT IF DRAWING BORDER IS 22" x 34".

DRAWING: \$FILES\$ PLOTTED ON: \$DATE\$ PLOTTED BY: \$USERNAMES\$ PLOTTED FROM: \$COMPUTERNAME\$

PLOTTED FROM: \$COMPUTERNAME\$

PLOTTED BY: \$USERNAME\$

PLOTTED ON: \$DATE\$

DRAWING: \$FILE\$

MATCHLINE - SEE SHT EV1.1

CAOS, HENI, HEMI, NADO, RHSP 'R', SARU

POMU

COLLEGE ST
PED MALL

VIDA

FESPP

VIDA

CAOS, HENI, HEMI,
NADO, RHSP 'R', SARU,

3RD AVE PED MALL

GROUNDCOVER LEGEND

- ARCTOSTAPHYLOS UVA-URSI - KINNICKINNICK (ARUV)
- BARE EARTH
- BARK MULCH
- PAVING
- COTONEASTER DAMMERI - BEARBERRY COTONEASTER (CODA)
- GRAVEL
- HEDERA HELIX - ENGLISH IVY (HEHE)
- JUNCUS EFFUSUS - SOFT RUSH (JUEF)
- LAWN
- PACHYSANDRA TERMINALIS - JAPANESE SPURGE (PATE)
- SARCOCOCCA HOOKERIANA VAR HUMILIS - HIMALAYAN SWEETBOX (SAHO)
- VARIOUS GROUNDCOVER PLANTING (SEE NOTE AND LABEL)
- VARIOUS WEEDS
- VINCA MINOR - SMALL PERIWINKLE (VIMI)
- WATER QUALITY FACILITY

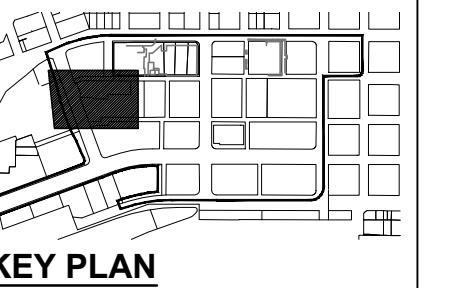
SHRUB LEGEND

- BERBERIS THUNBERGII 'ATROPURPUREA' - PURPLE JAPANESE BARBERRY (BETH)
- COTONEASTER LACTEUS - PARNEY COTONEASTER (COLA)
- EUONYMUS JAPONICUS 'AURO-MARGINATUS' - VARIEGATED JAPANESE EUONYMUS (EUJA)
- ILEX CORNUTA - CHINESE HOLLY (ILCO)
- ILEX CRENATA 'HELLERI' - JAPANESE HOLLY (ILCR)
- MAHONIA AQUIFOLIUM - TALL OREGON GRAPE (MAAQ)
- NANDINA DOMESTICA - HEAVENLY BAMBOO (NADO)
- PIERIS JAPONICA - ANDROMEDA (PIJA)
- RHODODENDRON SPP. - RHODODENDRON (RHSP 'R')
- VARIOUS SHRUB PLANTING (SEE NOTE AND LABEL)

NOTE:

VARIOUS GROUNDCOVER PLANTING INCLUDES: CAREX OSHIMENSIS - JAPANESE SEDGE (CAOS), HELLEBORUS NIGER - BLACK HELLEBORE (HENI), HEUCHERA MICRANTHA 'PALACE PURPLE' - PURPLE PALACE CORAL BELLS (HEMI), POLYSTICHUM MUNITUM - WESTERN SWORD FERN (POMU), SCHEDONORUS ARUNDINACEAE - TALL FESCUE (SCAR)

VARIOUS SHRUB PLANTING INCLUDES: EUONYMUS JAPONICUS 'AURO-MARGINATUS' - JAPANESE EUONYMUS (EUJA), ILEX CRENATA 'HELLERI' - JAPANESE HOLLY (ILCR), NANDINA DOMESTICA - HEAVENLY BAMBOO (NADO), PHORMIUM TENAX - NEW ZEALAND FLAX (PHTE), RHODODENDRON SPP. - RHODODENDRON (RHSP 'R'), SARCOCOCCA RUSCIFOLIA - FRAGRANT SWEETBOX (SARU), VIBURNUM DAVIDII - DAVID VIBURNUM (VIDA)



KEY PLAN

SECTION:

PROJECT MANAGER:

DRAWN BY:

SCALE:

DATE: 12/17/2018

REVISIONS

DATE	DESCRIPTION	BY

PROJECT LIMITS

SW LINCOLN ST

CAOS, EUJA,
ILCR, PHTE

SOURCE FOUNTAIN

2ND AVE PED MALL

SPARSELY VEGETATED

SPARSELY VEGETATED

DEAD/DYING

MATCHLINE - SEE SHT EV1.9

MATCHLINE - SEE SHT EV1.6

EXISTING SHRUB AND GROUNDCOVER SURVEYED 2/26-28/2018 BY ESA.



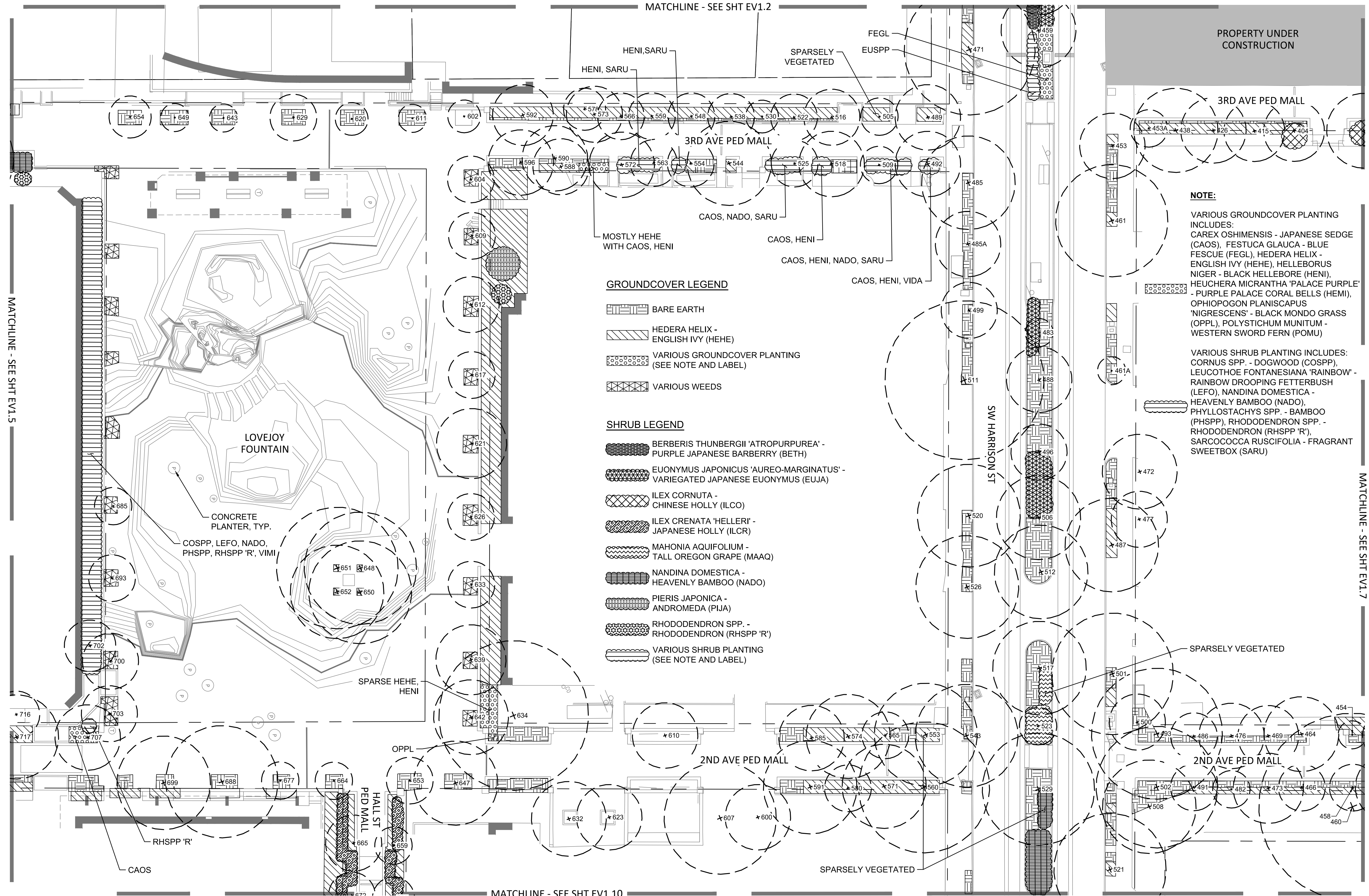
NOTE:
SCALE INDICATED ON DRAWING IS CORRECT IF DRAWING BORDER IS 22" x 34".

PLOTTED FROM: \$COMPUTERNAME\$

PLOTTED BY: \$USERNAME\$

PLOTTED ON: \$DATE\$

DRAWING: \$FILES\$



GROUNDCOVER LEGEND

- BARE EARTH
- HEDERA HELIX - ENGLISH IVY (HEHE)
- VARIOUS GROUNDCOVER PLANTING (SEE NOTE AND LABEL)
- VARIOUS WEEDS

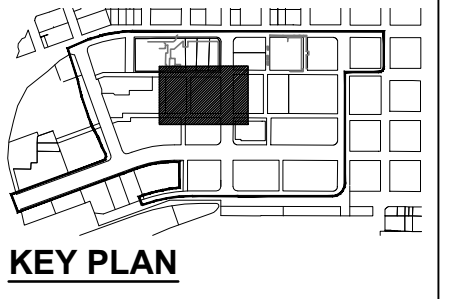
SHRUB LEGEND

- BERBERIS THUNBERGII 'ATROPURPUREA' - PURPLE JAPANESE BARBERRY (BETH)
- EUONYMUS JAPONICUS 'AUREO-MARGINATUS' - VARIEGATED JAPANESE EUONYMUS (EUJA)
- ILEX CORNUTA - CHINESE HOLLY (ILCO)
- ILEX CRENATA 'HELLERI' - JAPANESE HOLLY (ILCR)
- MAHONIA AQUIFOLIUM - TALL OREGON GRAPE (MAAQ)
- NANDINA DOMESTICA - HEAVENLY BAMBOO (NADO)
- PIERIS JAPONICA - ANDROMEDA (PIJA)
- RHODODENDRON SPP. - RHODODENDRON (RHSP 'R')
- VARIOUS SHRUB PLANTING (SEE NOTE AND LABEL)

NOTE:

VARIOUS GROUNDCOVER PLANTING INCLUDES:
 CAREX OSHIMENSIS - JAPANESE SEDGE (CAOS), FESTUCA GLAUCA - BLUE FESCUE (FEGL), HEDERA HELIX - ENGLISH IVY (HEHE), HELLEBORUS NIGER - BLACK HELLEBORE (HENI), HEUCHERA MICRANTHA 'PALACE PURPLE' - PURPLE PALACE CORAL BELLS (HEMI), OPHIOPOGON PLANISCAPUS 'NIGRESCENS' - BLACK MONDO GRASS (OPPL), POLYSTICHUM MUNITUM - WESTERN SWORD FERN (POMU)

VARIOUS SHRUB PLANTING INCLUDES:
 CORNUS SPP. - DOGWOOD (COSPP), LEUCOTHOE FONTANESIANA 'RAINBOW' - RAINBOW DROOPING FETTERBUSH (LEFO), NANDINA DOMESTICA - HEAVENLY BAMBOO (NADO), PHYLLOSTACHYS SPP. - BAMBOO (PHSP), RHODODENDRON SPP. - RHODODENDRON (RHSP 'R'), SARCOCOCCA RUSCIFOLIA - FRAGRANT SWEETBOX (SARU)



SECTION:

PROJECT MANAGER:

DRAWN BY:

DATE: 12/17/2018

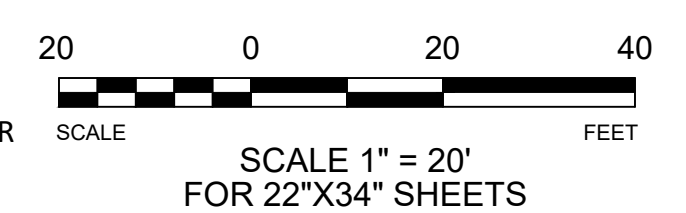
SCALE:

Portland Parks and Recreation
 Halprin Open Space Sequence

Nick Fish, Commissioner - Kia Selley, Interim Director
 SW 1st Avenue and SW Lincoln Street to SW 4th Avenue and SW Clay Street
 Portland, Oregon

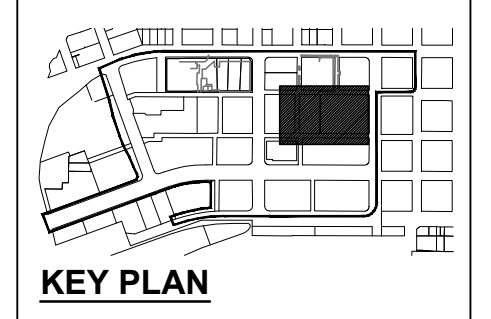
REVISIONS

DATE	DESCRIPTION	BY



EXISTING SHRUB AND GROUNDCOVER SURVEYED 2/26-28/2018 BY ESA.

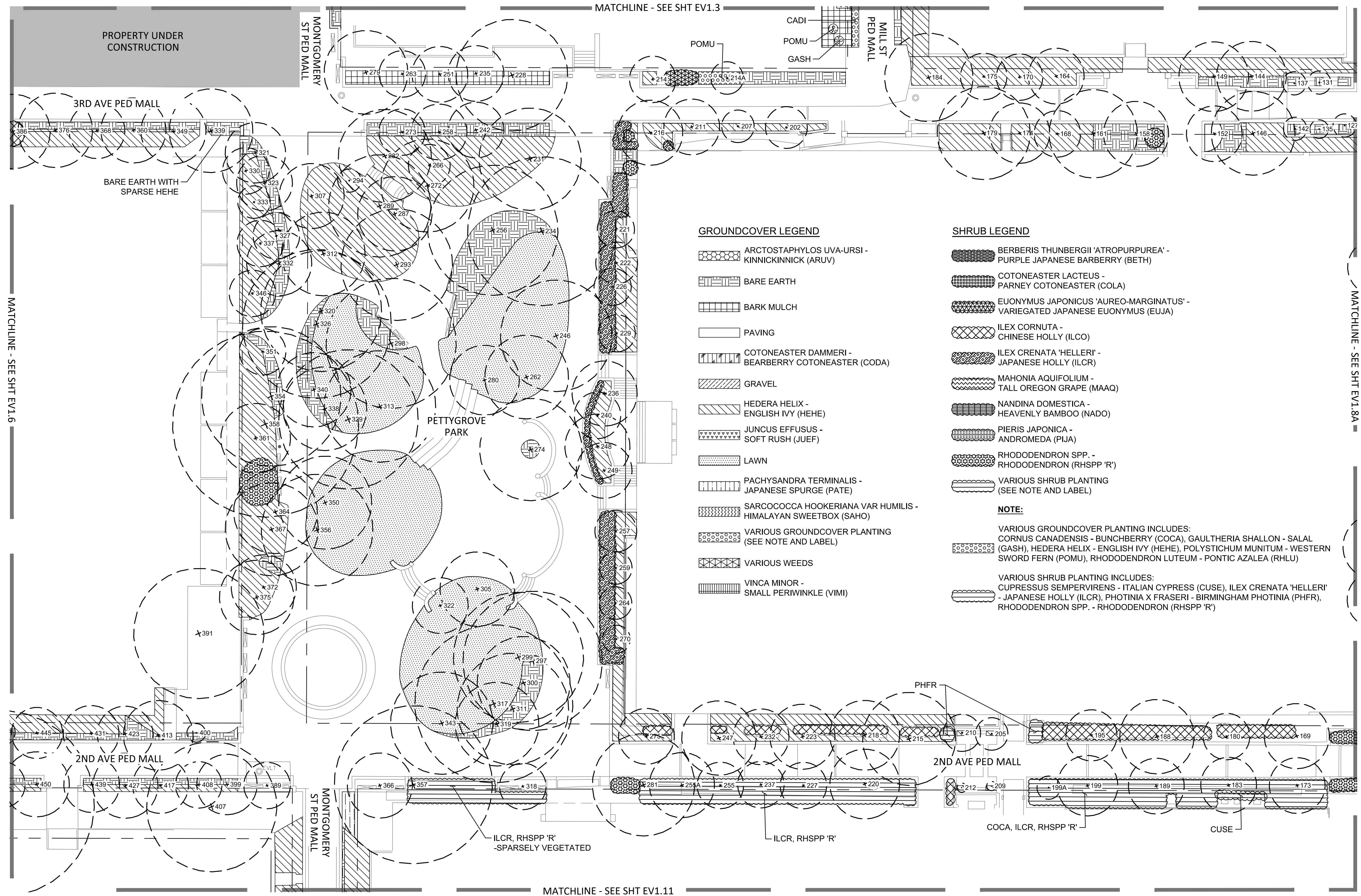
NOTE: SCALE INDICATED ON DRAWING IS CORRECT IF DRAWING BORDER IS 22" X 34".



SECTION:
DRAWN BY:
PROJECT MANAGER:
DATE: 12/17/2018

Portland Parks and Recreation
Commissioner - Kia Selley, Interim Director
Halprin Open Space Sequence
SW 1st Avenue and SW Lincoln Street to SW 4th Avenue and SW Clay Street
Portland, Oregon

REVISIONS		
DATE	DESCRIPTION	BY



GROUNDCOVER LEGEND

- ARCTOSTAPHYLOS UVA-URSI - KINNICKINNICK (ARUV)
- BARE EARTH
- BARK MULCH
- PAVING
- COTONEASTER DAMMERI - BEARBERRY COTONEASTER (CODA)
- GRAVEL
- HEDERA HELIX - ENGLISH IVY (HEHE)
- JUNCUS EFFUSUS - SOFT RUSH (JUEF)
- LAWN
- PACHYSANDRA TERMINALIS - JAPANESE SPURGE (PATE)
- SARCOCOCCA HOOKERIANA VAR HUMILIS - HIMALAYAN SWEETBOX (SAHO)
- VARIOUS GROUNDCOVER PLANTING (SEE NOTE AND LABEL)
- VARIOUS WEEDS
- VINCA MINOR - SMALL PERIWINKLE (VIMI)

SHRUB LEGEND

- BERBERIS THUNBERGII 'ATROPURPUREA' - PURPLE JAPANESE BARBERRY (BETH)
- COTONEASTER LACTEUS - PARNEY COTONEASTER (COLA)
- EUONYMUS JAPONICUS 'AURO-MARGINATUS' - VARIEGATED JAPANESE EUONYMUS (EUJA)
- ILEX CORNUTA - CHINESE HOLLY (ILCO)
- ILEX CRENATA 'HELLERI' - JAPANESE HOLLY (ILCR)
- MAHONIA AQUIFOLIUM - TALL OREGON GRAPE (MAAQ)
- NANDINA DOMESTICA - HEAVENLY BAMBOO (NADO)
- PIERIS JAPONICA - ANDROMEDA (PIJA)
- RHODODENDRON SPP. - RHODODENDRON (RHSPP 'R')
- VARIOUS SHRUB PLANTING (SEE NOTE AND LABEL)

NOTE:

VARIOUS GROUNDCOVER PLANTING INCLUDES:
CORNUS CANADENSIS - BUNCHBERRY (COCA), GAULTHERIA SHALLON - SALAL (GASH), HEDERA HELIX - ENGLISH IVY (HEHE), POLYSTICHUM MUNIUM - WESTERN SWORD FERN (POMU), RHODODENDRON LUTEUM - PONTIC AZALEA (RHLU)

VARIOUS SHRUB PLANTING INCLUDES:
CUPRESSUS SEMPERVIRENS - ITALIAN CYPRESS (CUSE), ILEX CRENATA 'HELLERI' - JAPANESE HOLLY (ILCR), PHOTINIA X FRASERI - BIRMINGHAM PHOTINIA (PHFR), RHODODENDRON SPP. - RHODODENDRON (RHSPP 'R')



EXISTING SHRUB AND GROUNDCOVER SURVEYED 2/26-28/2018 BY ESA.



NOTE: SCALE INDICATED ON DRAWING IS CORRECT IF DRAWING BORDER IS 22" X 34".

DRAWING: \$FILES\$ PLOTTED ON: \$DATE\$ PLOTTED BY: \$USERNAME\$ PLOTTED FROM: \$COMPUTERNAME\$

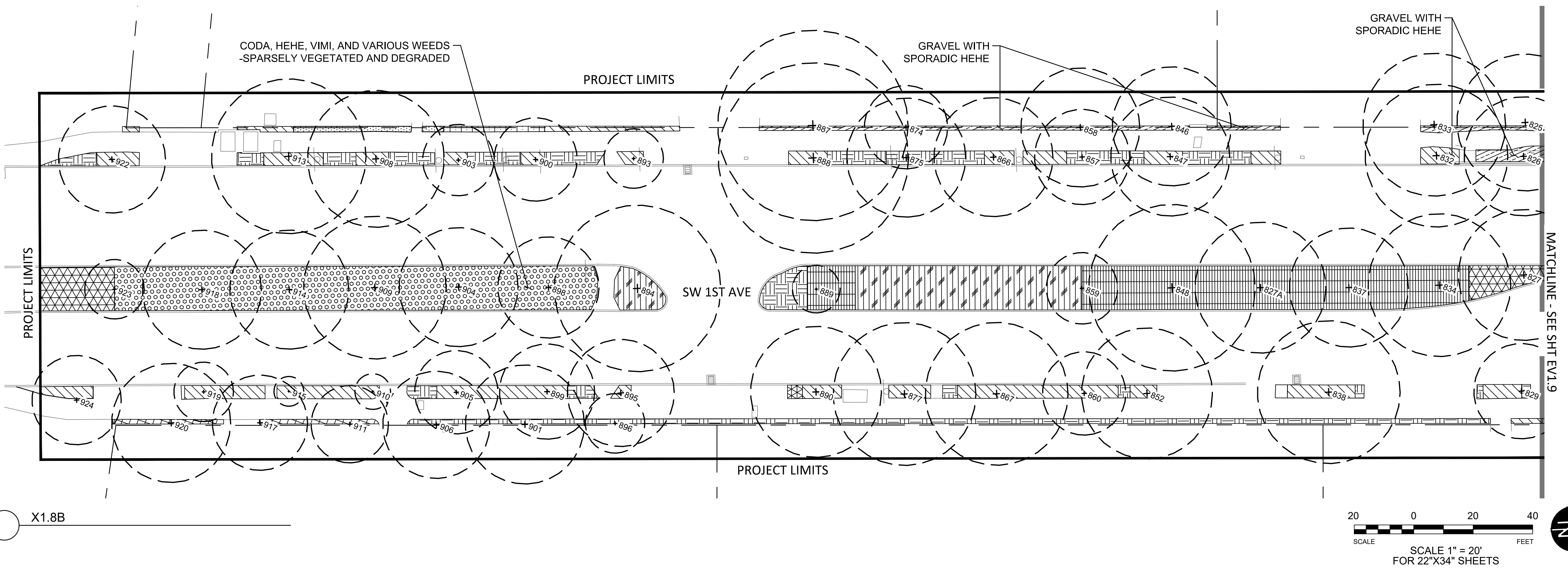
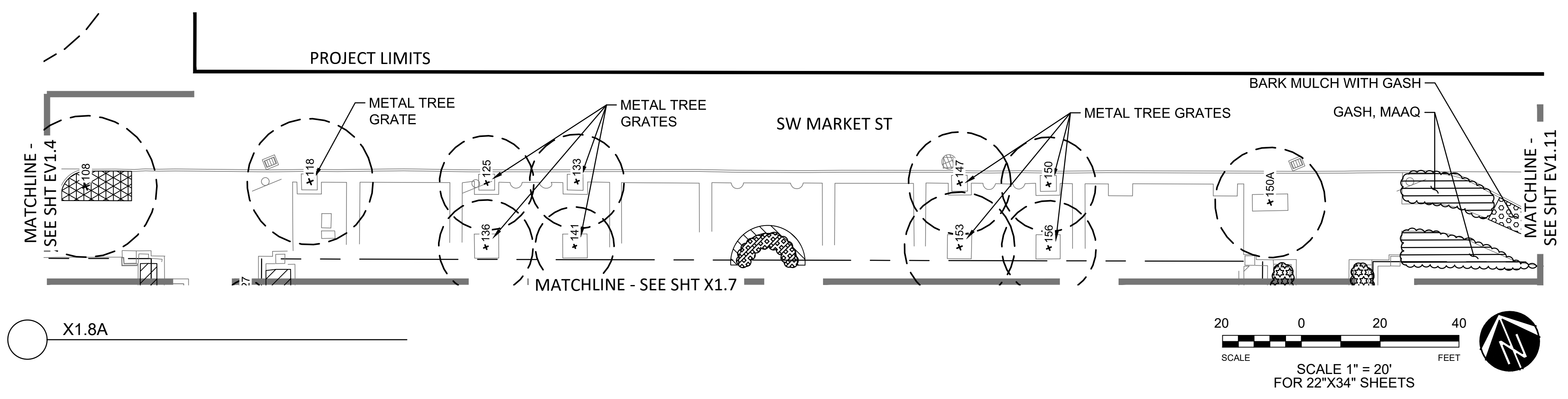
MATCHLINE - SEE SHT EV1.6

MATCHLINE - SEE SHT EV1.11

MATCHLINE - SEE SHT EV1.8A

MATCHLINE - SEE SHT EV1.3

DRAWING: \$FILES\$ PLOTTED ON: \$DATE\$ PLOTTED BY: \$USERNAME\$ PLOTTED FROM: \$COMPUTERNAME\$



GROUNDCOVER LEGEND

- ARCTOSTAPHYLOS UVA-URSI - KINNICKINNICK (ARUV)
- BARE EARTH
- BARK MULCH
- PAVING
- COTONEASTER DAMMERI - BEARBERRY COTONEASTER (CODA)
- GRAVEL
- HEDERA HELIX - ENGLISH IVY (HEHE)
- JUNCUS EFFUSUS - SOFT RUSH (JUEF)
- LAWN

- PACHYSANDRA TERMINALIS - JAPANESE SPURGE (PATE)
- SARCOCOCCA HOOKERIANA VAR HUMILIS - HIMALAYAN SWEETBOX (SAHO)
- VARIOUS GROUNDCOVER PLANTING (SEE NOTE AND LABEL)
- VARIOUS WEEDS
- VINCA MINOR - SMALL PERIWINKLE (VIMI)
- WATER QUALITY FACILITY

SHRUB LEGEND

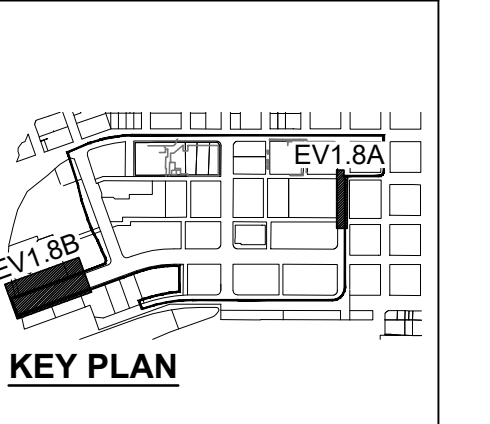
- BERBERIS THUNBERGII 'ATROPURPUREA' - PURPLE JAPANESE BARBERRY (BETH)
- COTONEASTER LACTEUS - PARNEY COTONEASTER (COLA)
- EUONYMUS JAPONICUS 'AUREO-MARGINATUS' - VARIEGATED JAPANESE EUONYMUS (EUJA)
- ILEX CORNUTA - CHINESE HOLLY (ILCO)
- ILEX CRENATA 'HELLERI' - JAPANESE HOLLY (ILCR)
- MAHONIA AQUIFOLIUM - TALL OREGON GRAPE (MAAQ)
- NANDINA DOMESTICA - HEAVENLY BAMBOO (NADO)
- PIERIS JAPONICA - ANDROMEDA (PIJA)
- RHODODENDRON SPP. - RHODODENDRON (RHSP 'R')
- VARIOUS SHRUB PLANTING (SEE NOTE AND LABEL)

NOTE:
 VARIOUS GROUNDCOVER PLANTING INCLUDES:
 COTONEASTER DAMMERI - BEARBERRY COTONEASTER (CODA), GAULTHERIA SHALLON - SALAL (GASH), HEDERA HELIX - ENGLISH IVY (HEHE), VINCA MINOR - SMALL PERIWINKLE (ILCR)

VARIOUS SHRUB PLANTING INCLUDES:
 MAHONIA AQUIFOLIUM - TALL OREGON GRAPE (MAAQ)

EXISTING SHRUB AND GROUNDCOVER SURVEYED 2/26-28/2018 BY ESA.

NOTE:
 SCALE INDICATED ON DRAWING IS CORRECT IF DRAWING BORDER IS 22" x 34".



Portland Parks and Recreation
 Nick Fish, Commissioner - Kia Selley, Interim Director

Halprin Open Space Sequence
 SW 1st Avenue and SW Lincoln Street to SW 4th Avenue and SW Clay Street
 Portland, Oregon

PROJECT MANAGER:
 DRAWN BY:
 SECTION:
 DATE: 12/17/2018
 SCALE:

REVISIONS		
DATE	DESCRIPTION	BY

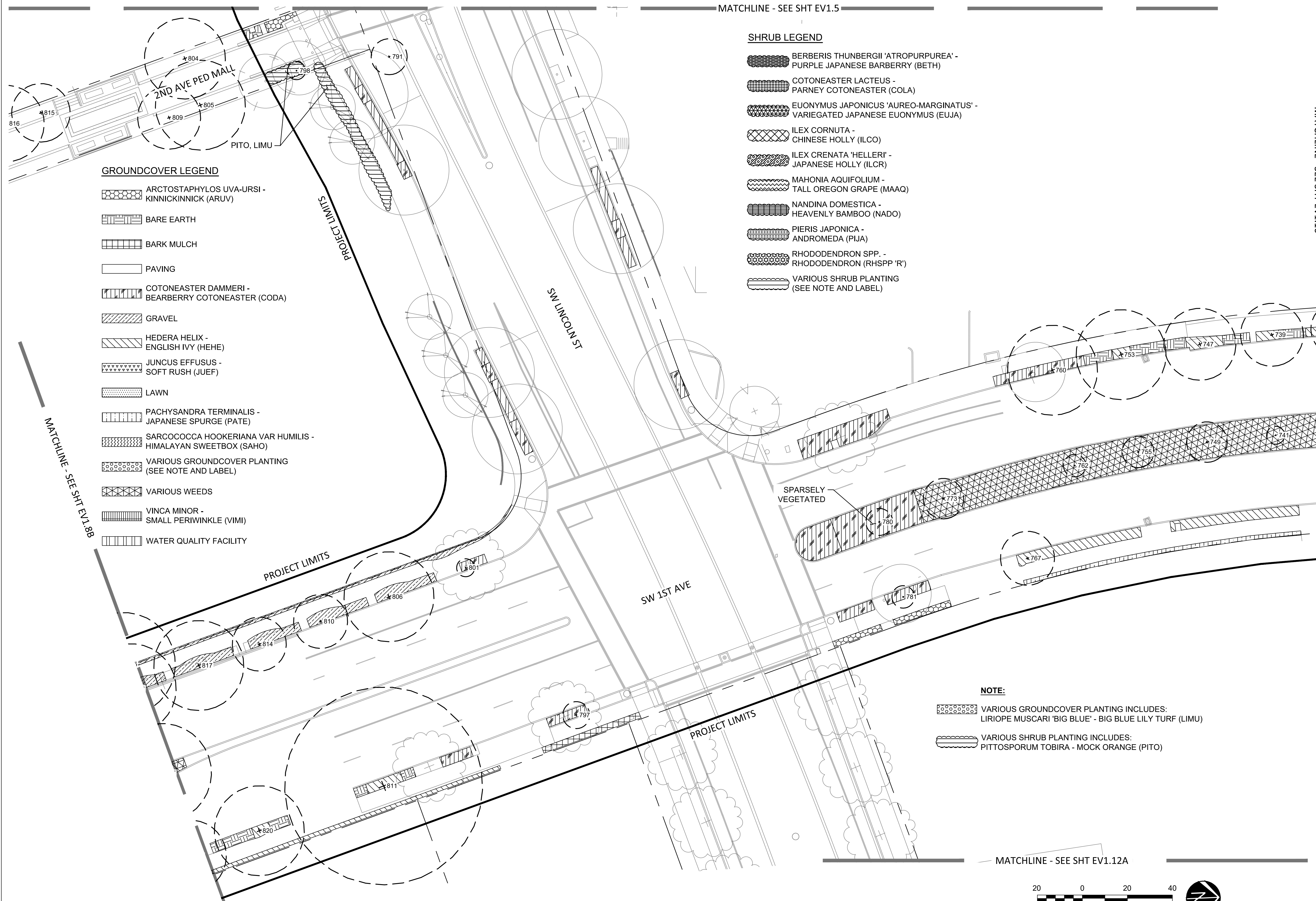
Sheet Title
EV1.8
 EXISTING VEGETATION PLAN

PLOTTED FROM: \$COMPUTERNAME\$

PLOTTED BY: \$USERNAME\$

PLOTTED ON: \$DATE\$

DRAWING: \$FILES\$



GROUND COVER LEGEND

- ARCTOSTAPHYLOS UVA-URSI - KINNICKINNICK (ARUV)
- BARE EARTH
- BARK MULCH
- PAVING
- COTONEASTER DAMMERI - BEARBERRY COTONEASTER (CODA)
- GRAVEL
- HEDERA HELIX - ENGLISH IVY (HEHE)
- JUNCUS EFFUSUS - SOFT RUSH (JUEF)
- LAWN
- PACHYSANDRA TERMINALIS - JAPANESE SPURGE (PATE)
- SARCOCOCCA HOOKERIANA VAR HUMILIS - HIMALAYAN SWEETBOX (SAHO)
- VARIOUS GROUND COVER PLANTING (SEE NOTE AND LABEL)
- VARIOUS WEEDS
- VINCA MINOR - SMALL PERIWINKLE (VIMI)
- WATER QUALITY FACILITY

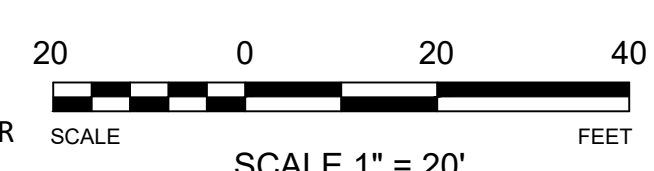
SHRUB LEGEND

- BERBERIS THUNBERGII 'ATROPURPUREA' - PURPLE JAPANESE BARBERRY (BETH)
- COTONEASTER LACTEUS - PARNEY COTONEASTER (COLA)
- EUONYMUS JAPONICUS 'AUREO-MARGINATUS' - VARIEGATED JAPANESE EUONYMUS (EUJA)
- ILEX CORNUTA - CHINESE HOLLY (ILCO)
- ILEX CRENATA 'HELLERI' - JAPANESE HOLLY (ILCR)
- MAHONIA AQUIFOLIUM - TALL OREGON GRAPE (MAAQ)
- NANDINA DOMESTICA - HEAVENLY BAMBOO (NADO)
- PIERIS JAPONICA - ANDROMEDA (PIJA)
- RHODODENDRON SPP. - RHODODENDRON (RHSP 'R')
- VARIOUS SHRUB PLANTING (SEE NOTE AND LABEL)

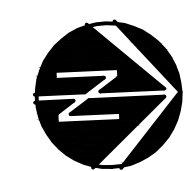
NOTE:

- VARIOUS GROUND COVER PLANTING INCLUDES: LIRIOPE MUSCARI 'BIG BLUE' - BIG BLUE LILY TURF (LIMU)
- VARIOUS SHRUB PLANTING INCLUDES: PITTOSPORUM TOBIRA - MOCK ORANGE (PITO)

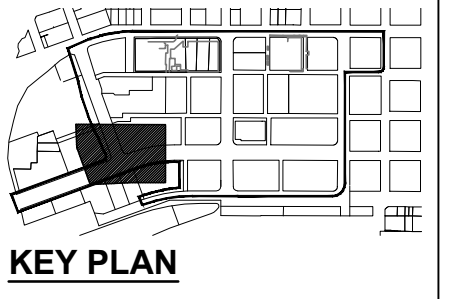
MATCHLINE - SEE SHT EV1.12A



EXISTING SHRUB AND GROUND COVER SURVEYED 2/26-28/2018 BY ESA.



NOTE: SCALE INDICATED ON DRAWING IS CORRECT IF DRAWING BORDER IS 22" X 34".



Portland Parks and Recreation
 Commissioner - Kia Selley, Interim Director
Halprin Open Space Sequence
 SW 1st Avenue and SW Lincoln Street to SW 4th Avenue and SW Clay Street
 Portland, Oregon
 PROJECT MANAGER:
 DRAWN BY:
 SECTION:
 DATE: 12/17/2018
 SCALE:

REVISIONS		
DATE	DESCRIPTION	BY

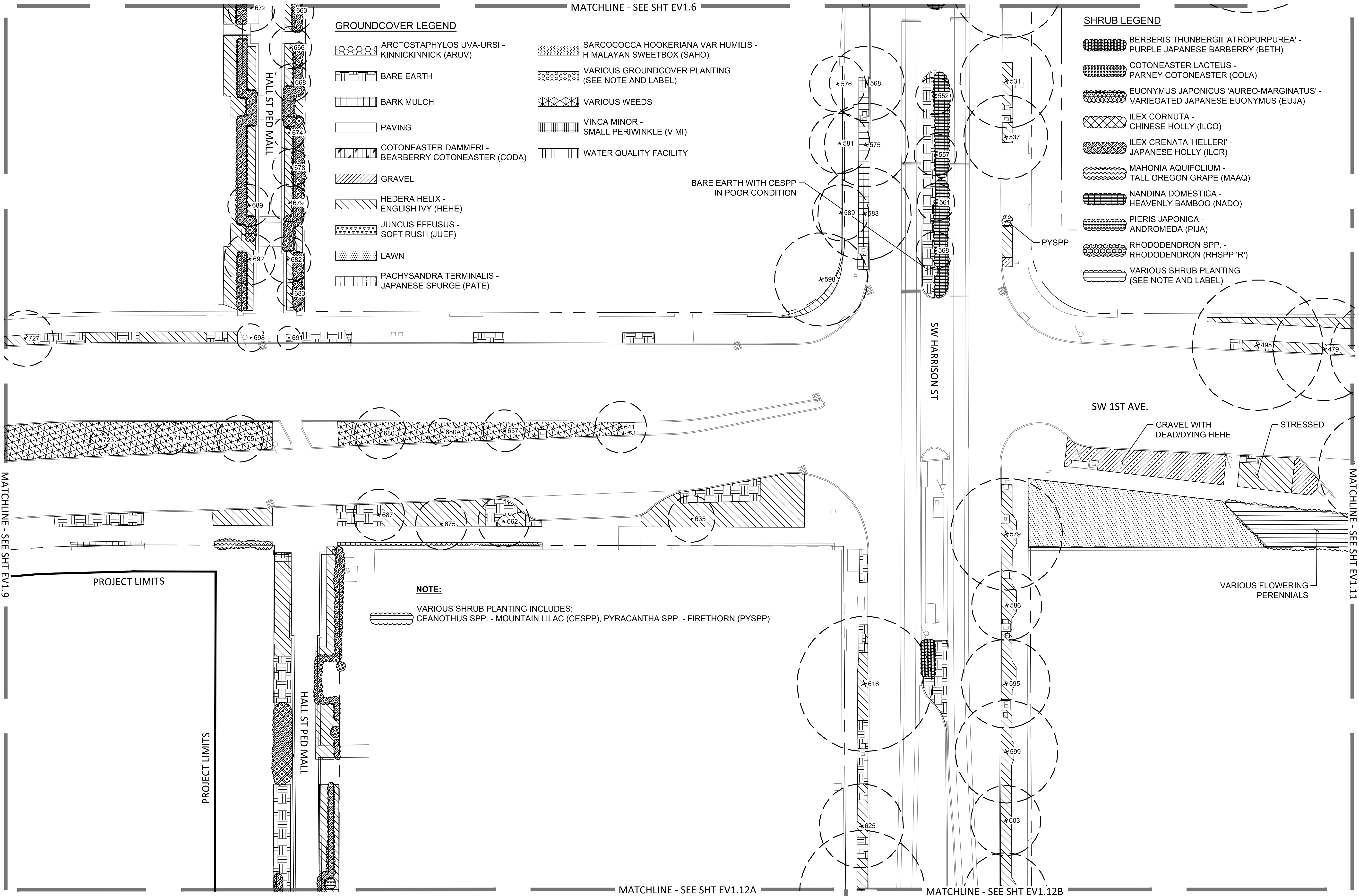
Sheet Title
EV1.9
 EXISTING VEGETATION PLAN

PLOTTED FROM: \$COMPUTERNAME\$

PLOTTED BY: \$USERNAME\$

PLOTTED ON: \$DATE\$

DRAWING: \$FILES\$



GROUNDCOVER LEGEND

- ARCTOSTAPHYLOS UVA-URSI - KINNICKINNICK (ARUV)
- BARE EARTH
- BARK MULCH
- PAVING
- COTONEASTER DAMMERI - BEARBERRY COTONEASTER (CODA)
- GRAVEL
- HEDERA HELIX - ENGLISH IVY (HEHE)
- JUNCUS EFFUSUS - SOFT RUSH (JUEF)
- LAWN
- PACHYSANDRA TERMINALIS - JAPANESE SPURGE (PATE)
- SARCOCOCCA HOOKERIANA VAR HUMILIS - HIMALAYAN SWEETBOX (SAHO)
- VARIOUS GROUNDCOVER PLANTING (SEE NOTE AND LABEL)
- VARIOUS WEEDS
- VINCA MINOR - SMALL PERIWINKLE (VIMI)
- WATER QUALITY FACILITY

SHRUB LEGEND

- BERBERIS THUNBERGII 'ATROPURPUREA' - PURPLE JAPANESE BARBERRY (BETH)
- COTONEASTER LACTEUS - PARNEY COTONEASTER (COLA)
- EUONYMUS JAPONICUS 'AUREO-MARGINATUS' - VARIEGATED JAPANESE EUONYMUS (EUJA)
- ILEX CORNUTA - CHINESE HOLLY (ILCO)
- ILEX CRENATA 'HELLER' - JAPANESE HOLLY (ILCR)
- MAHONIA AQUIFOLIUM - TALL OREGON GRAPE (MAAQ)
- NANDINA DOMESTICA - HEAVENLY BAMBOO (NADO)
- PIERIS JAPONICA - ANDROMEDA (PIJA)
- RHODODENDRON SPP. - RHODODENDRON (RHSP 'R')
- VARIOUS SHRUB PLANTING (SEE NOTE AND LABEL)

NOTE:

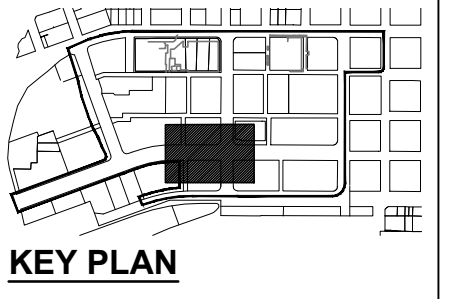
VARIOUS SHRUB PLANTING INCLUDES:
CEANOTHUS SPP. - MOUNTAIN LILAC (CESPP), PYRACANTHA SPP. - FIRETHORN (PYSPP)

BARE EARTH WITH CESPP
IN POOR CONDITION

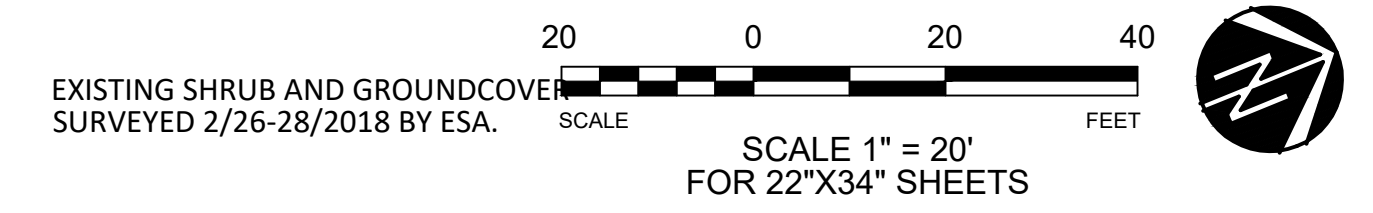
SW 1ST AVE.

GRAVEL WITH DEAD/DYING HEHE
STRESSED

VARIOUS FLOWERING PERENNIALS



REVISIONS		
DATE	DESCRIPTION	BY



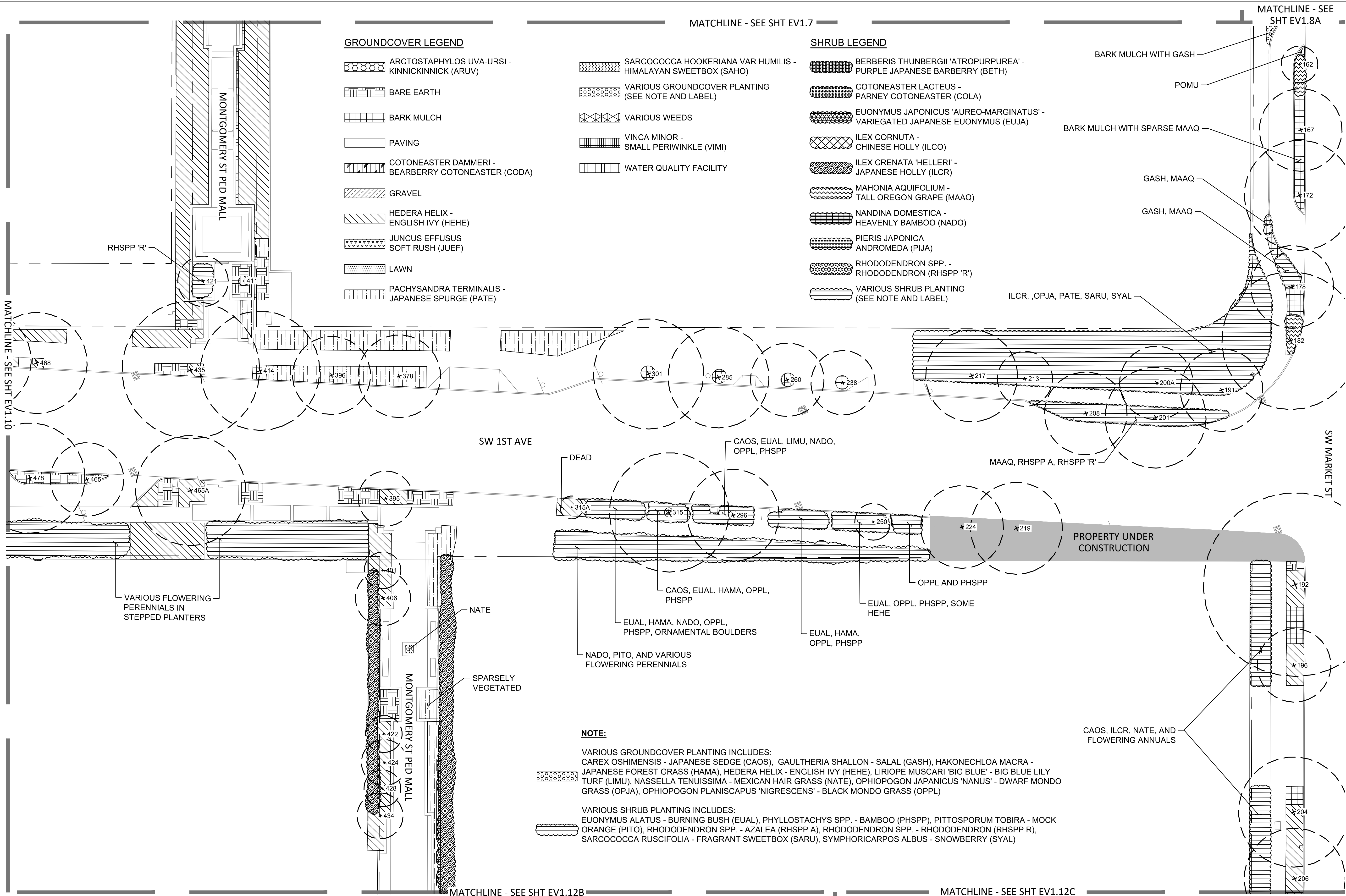
NOTE:
SCALE INDICATED ON DRAWING IS CORRECT IF DRAWING BORDER IS 22" x 34".

PLOTTED FROM: \$COMPUTERNAME\$

PLOTTED BY: \$USERNAME\$

PLOTTED ON: \$DATE\$

DRAWING: \$FILES\$



GROUNDCOVER LEGEND

- ARCTOSTAPHYLOS UVA-URSI - KINNICKINNICK (ARUV)
- BARE EARTH
- BARK MULCH
- PAVING
- COTONEASTER DAMMERI - BEARBERRY COTONEASTER (CODA)
- GRAVEL
- HEDERA HELIX - ENGLISH IVY (HEHE)
- JUNCUS EFFUSUS - SOFT RUSH (JUEF)
- LAWN
- PACHYSANDRA TERMINALIS - JAPANESE SPURGE (PATE)
- SARCOCOCCA HOOKERIANA VAR HUMILIS - HIMALAYAN SWEETBOX (SAHO)
- VARIOUS GROUNDCOVER PLANTING (SEE NOTE AND LABEL)
- VARIOUS WEEDS
- VINCA MINOR - SMALL PERIWINKLE (VIMI)
- WATER QUALITY FACILITY

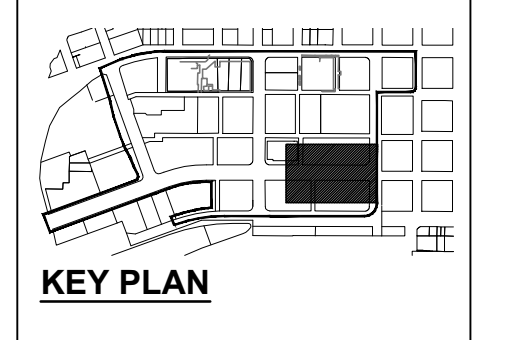
SHRUB LEGEND

- BERBERIS THUNBERGII 'ATROPURPUREA' - PURPLE JAPANESE BARBERRY (BETH)
- COTONEASTER LACTEUS - PARNEY COTONEASTER (COLA)
- EUONYMUS JAPONICUS 'AUREO-MARGINATUS' - VARIEGATED JAPANESE EUONYMUS (EUJA)
- ILEX CORNUTA - CHINESE HOLLY (ILCO)
- ILEX CRENATA 'HELLERI' - JAPANESE HOLLY (ILCR)
- MAHONIA AQUIFOLIUM - TALL OREGON GRAPE (MAAQ)
- NANDINA DOMESTICA - HEAVENLY BAMBOO (NADO)
- PIERIS JAPONICA - ANDROMEDA (PIJA)
- RHODODENDRON SPP. - RHODODENDRON (RHSP 'R')
- VARIOUS SHRUB PLANTING (SEE NOTE AND LABEL)

NOTE:

VARIOUS GROUNDCOVER PLANTING INCLUDES:
 CAREX OSHIMENSIS - JAPANESE SEDGE (CAOS), GAULTHERIA SHALLON - SALAL (GASH), HAKONECHLOA MACRA - JAPANESE FOREST GRASS (HAMA), HEDERA HELIX - ENGLISH IVY (HEHE), LIRIOPE MUSCARI 'BIG BLUE' - BIG BLUE LILY TURF (LIMU), NASSELLA TENUISSIMA - MEXICAN HAIR GRASS (NATE), OPHIOPOGON JAPONICUS 'NANUS' - DWARF MONDO GRASS (OPJA), OPHIOPOGON PLANISCAPUS 'NIGRESCENS' - BLACK MONDO GRASS (OPPL)

VARIOUS SHRUB PLANTING INCLUDES:
 EUONYMUS ALATUS - BURNING BUSH (EUAL), PHYLLSTACHYS SPP. - BAMBOO (PHSPP), PITTOSPORUM TOBIRA - MOCK ORANGE (PITO), RHODODENDRON SPP. - AZALEA (RHSP A), RHODODENDRON SPP. - RHODODENDRON (RHSP R), SARCOCOCCA RUSCIFOLIA - FRAGRANT SWEETBOX (SARU), SYMPHORICARPOS ALBUS - SNOWBERRY (SYAL)

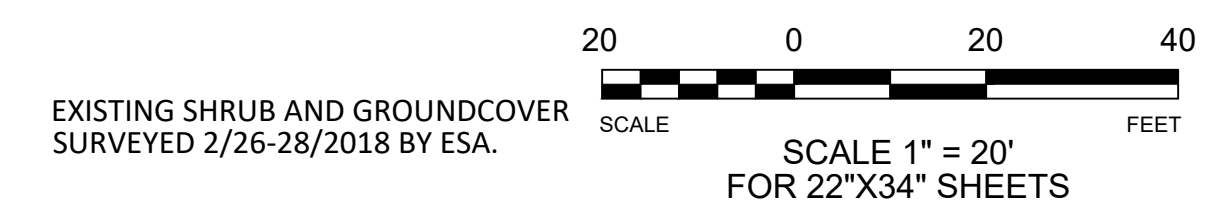


Portland Parks and Recreation
 Halprin Open Space Sequence
 SW 1st Avenue and SW Lincoln Street to SW 4th Avenue and SW Clay Street
 Portland, Oregon
 Commissioner - Kia Selley, Interim Director
 Project Manager:

REVISIONS

DATE	DESCRIPTION	BY

Sheet Title
EV1.11
 EXISTING VEGETATION PLAN



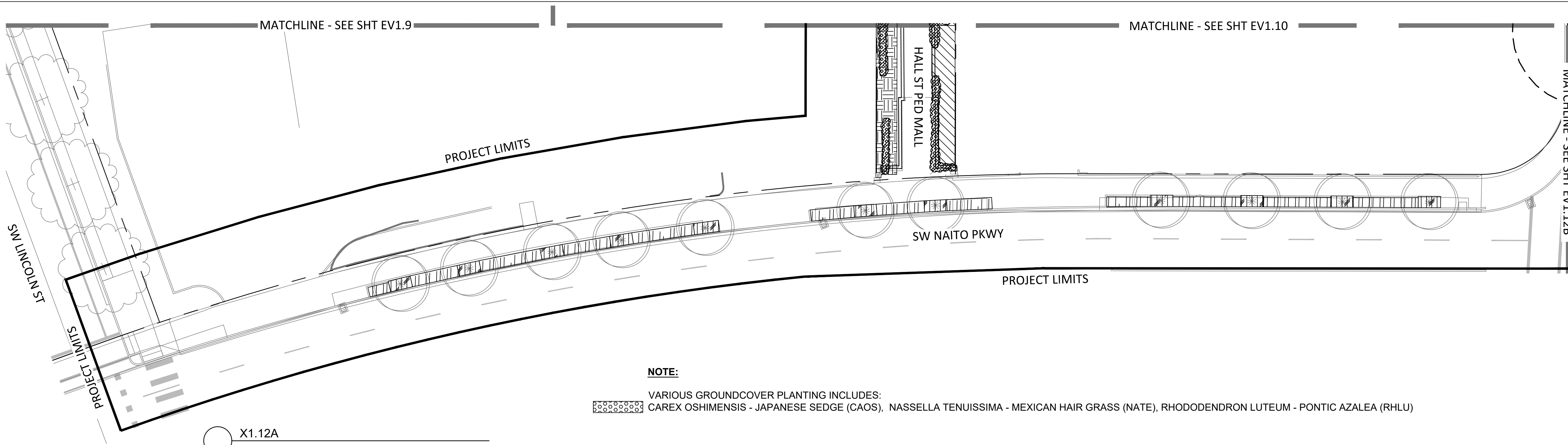
NOTE:
 SCALE INDICATED ON DRAWING IS CORRECT IF DRAWING BORDER IS 22" X 34".

PLOTTED FROM: \$COMPUTERNAME\$

PLOTTED BY: \$USERNAME\$

PLOTTED ON: \$DATE\$

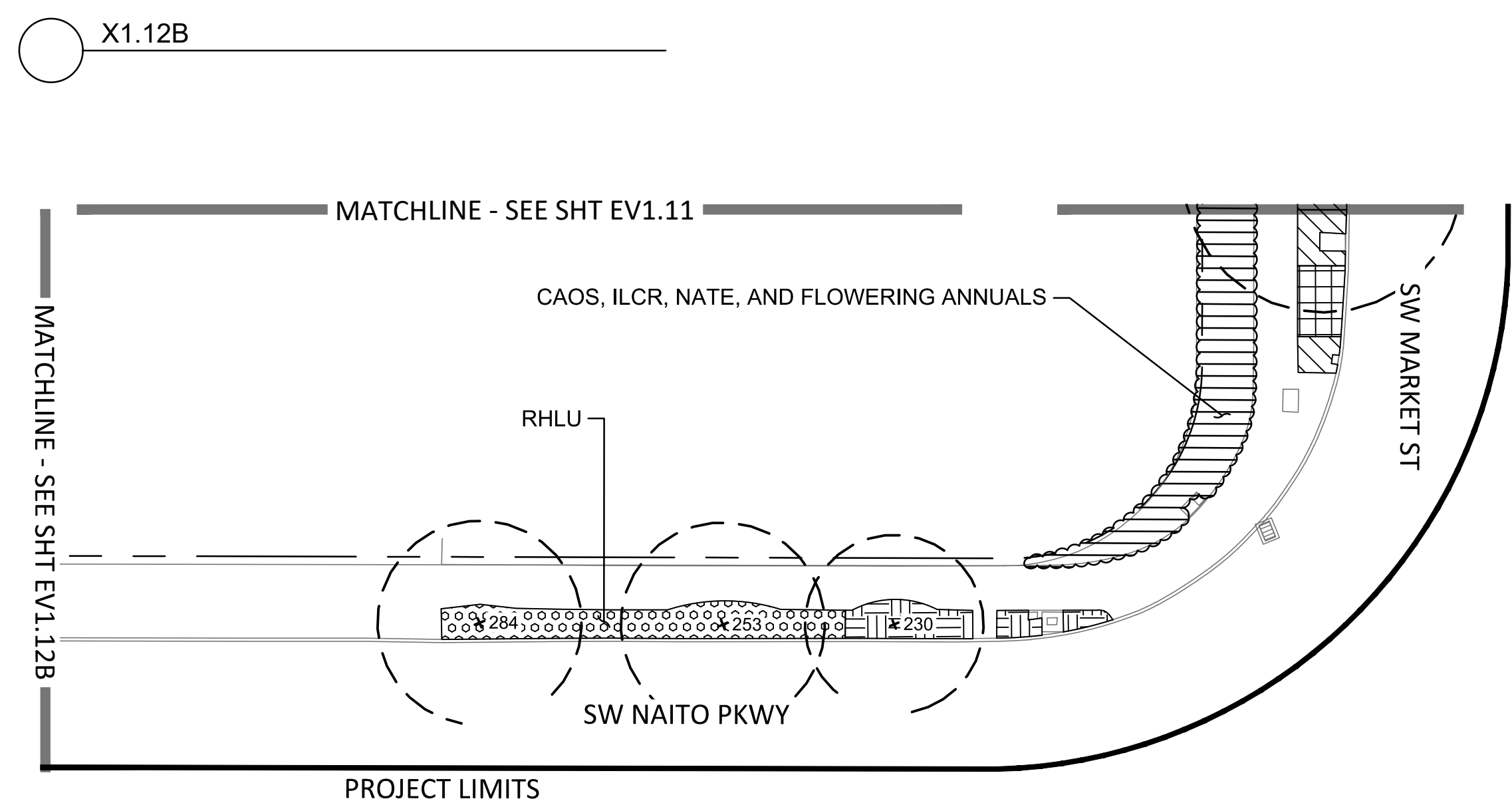
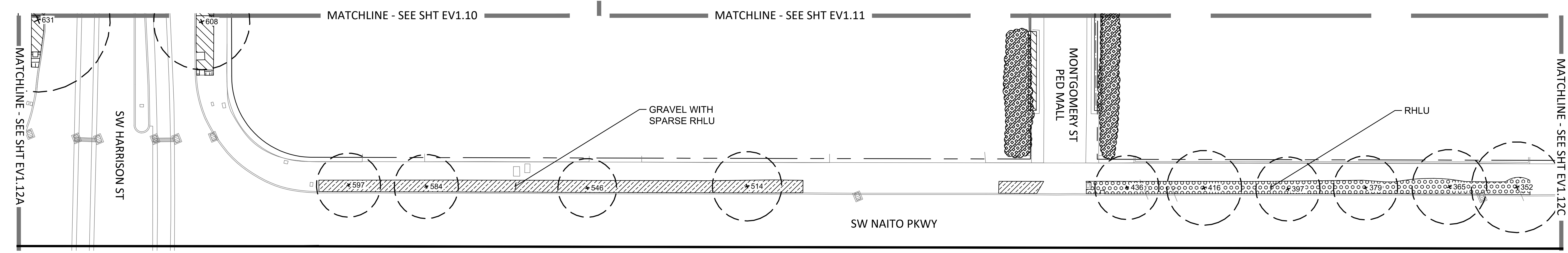
DRAWING: \$FILES\$



NOTE:

VARIOUS GROUNDCOVER PLANTING INCLUDES:

CAREX OSHIMENSIS - JAPANESE SEDGE (CAOS), NASSELLA TENUISSIMA - MEXICAN HAIR GRASS (NATE), RHODODENDRON LUTEUM - PONTIC AZALEA (RHLU)



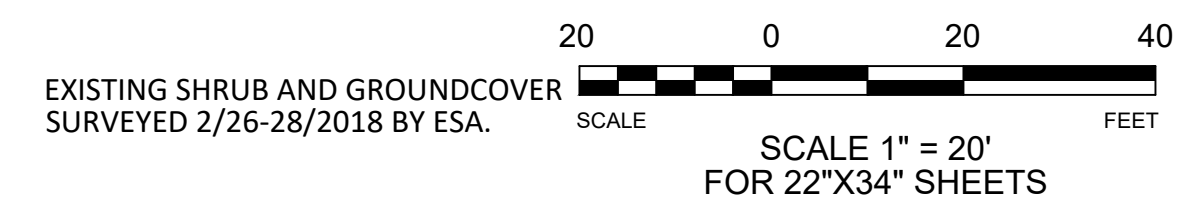
GROUNDCOVER LEGEND

- ARCTOSTAPHYLOS UVA-URSI - KINNICKINNICK (ARUV)
- BARE EARTH
- BARK MULCH
- PAVING
- COTONEASTER DAMMERI - BEARBERRY COTONEASTER (CODA)
- GRAVEL
- HEDERA HELIX - ENGLISH IVY (HEHE)
- JUNCUS EFFUSUS - SOFT RUSH (JUEF)
- LAWN
- PACHYSANDRA TERMINALIS - JAPANESE SPURGE (PATE)
- SARCOCOCCA HOOKERIANA VAR HUMILIS - HIMALAYAN SWEETBOX (SAHO)

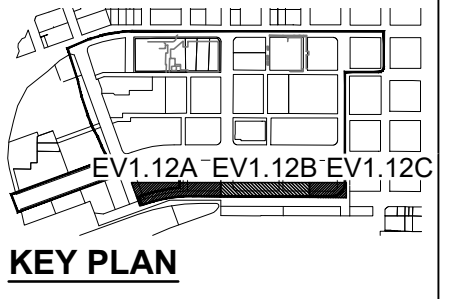
- VARIOUS GROUNDCOVER PLANTING (SEE NOTE AND LABEL)
- VARIOUS WEEDS
- VINCA MINOR - SMALL PERIWINKLE (VIMI)
- WATER QUALITY FACILITY

SHRUB LEGEND

- BERBERIS THUNBERGII 'ATROPURPUREA' - PURPLE JAPANESE BARBERRY (BETH)
- COTONEASTER LACTEUS - PARNEY COTONEASTER (COLA)
- EUONYMUS JAPONICUS 'AUREO-MARGINATUS' - VARIEGATED JAPANESE EUONYMUS (EUJA)
- ILEX CORNUTA - CHINESE HOLLY (ILCO)
- ILEX CRENATA 'HELLERI' - JAPANESE HOLLY (ILCR)
- MAHONIA AQUIFOLIUM - TALL OREGON GRAPE (MAAQ)
- NANDINA DOMESTICA - HEAVENLY BAMBOO (NADO)
- PIERIS JAPONICA - ANDROMEDA (PIJA)
- RHODODENDRON SPP. - RHODODENDRON (RHSP 'R')
- VARIOUS SHRUB PLANTING (SEE NOTE AND LABEL)



NOTE: SCALE INDICATED ON DRAWING IS CORRECT IF DRAWING BORDER IS 22" x 34".



Portland Parks and Recreation
Nick Fish, Commissioner - Kia Selley, Interim Director

Halprin Open Space Sequence
SW 1st Avenue and SW Lincoln Street to SW 4th Avenue and SW Clay Street
Portland, Oregon

PROJECT MANAGER:
DRAWN BY:
SECTION:
SCALE: 12/17/2018

REVISIONS		
DATE	DESCRIPTION	BY