

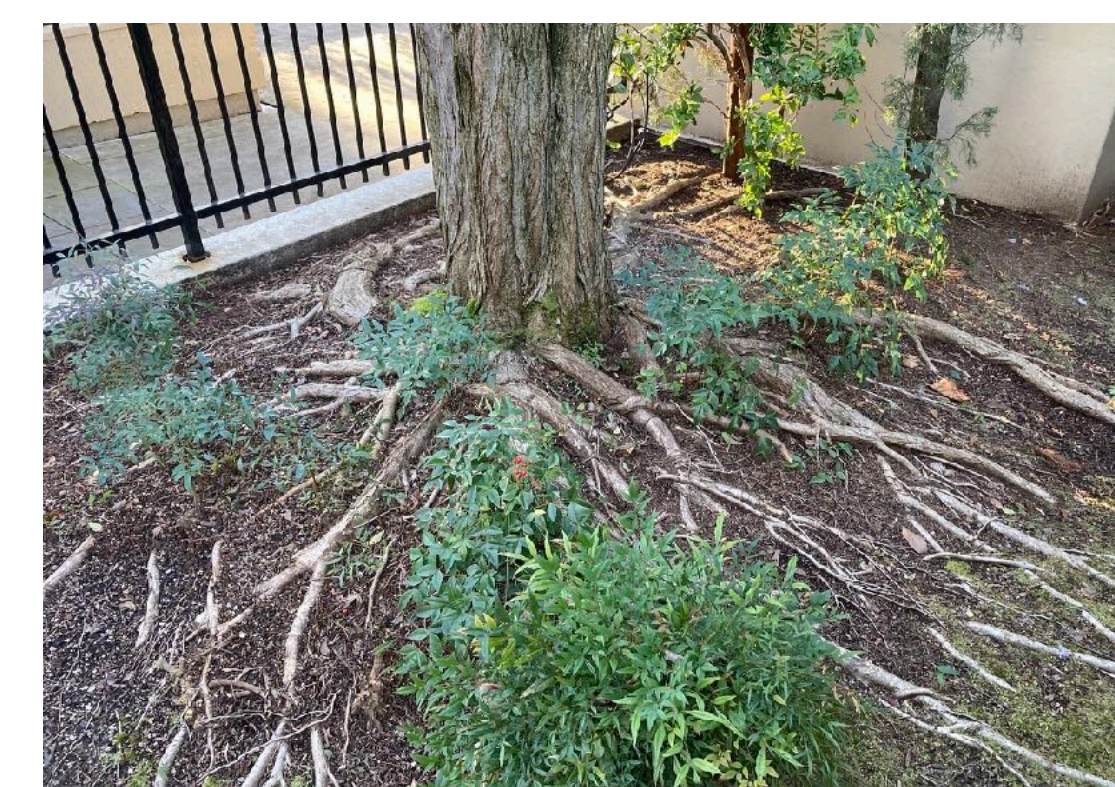
If there were an ASPCP—Society for the Prevention of Cruelty to **Plants**—the HW condominium surely would receive its share of citations. The 15” to 18” soil depth, originally intended for ground cover plants, has proven unsuitable for several of the tree species, all of which have had to rely solely on lateral root development, and much of it exposed because of lack of soil cover.

The saddest example is the large Katsura 1 (ca 40 feet tall) in the southeast corner, which has its entire root system exposed to the elements, with roots anchored under the concrete walls to prevent toppling. But, perennial leaf dehydration and early leaf dropping, suggest that the tree has reached its maximum life in this location.

The adjacent Italian cypresses, although better adapted to the limited soil, have become so tall, that they are vulnerable to high winds. Star magnolia 1, has a long root system that has become entangled with the ailing Katsura. Kousa dogwood 1 has its roots trapped by the concrete walkway. On and on. Conversely, Camellias and other shrubs have fared well in the restrictive environment. And as for the remnant, token lawn...? Yawn.

We have come to know that trees, as with other living organisms, are survivors and will try to keep alive by whatever means possible. (See: Richard Powers, *The Overstory*) Ironically, as part of that survivor instinct, tree roots can be very intrusive—even splitting concrete—and, more than likely, several of these trees have accelerated the deterioration of the remaining waterproofing membrane.

The conclusion is that smaller trees (between 2 and 5), and all of the shrubs, could be root-balled and salvaged during the upcoming courtyard project, phase 2. But, all the mature trees (between 14 and 17) have outgrown their environment. Even if the trees were salvageable, the question is: would one replant a mature tree back to a hostile environment? Or, is this an opportunity to reevaluate what kind of plants materials would be more appropriate for a shallow planting bed and win the approval of the ASPCP?



The root structure of Katsura 1—roots are doubling back on themselves and burrowing under the concrete curb wall. Sad.



The Italian cypresses are happier, but have grown so tall that they are vulnerable to high winds.

Click images to see them full size and to see more images. Requires internet connection.